

An aerial photograph of a wooden dock system on a lake. The dock is made of light-colored wood and has a red kayak on the left side, several Adirondack chairs in the middle, and a white motorboat on the right. A set of stairs leads down from the dock into the water. The background is a dense forest of evergreen trees on a rocky shoreline.

BERTRAND
Docks

**Quality, modularity
and durability**

PRODUCT CATALOGUE



PROUD CANADIAN
MANUFACTURER SINCE 1995



Bertrand Docks has been designing and manufacturing permanent, floating, and rolling docks and watercraft lifts since 1995.

Ingenuity, quality and durability are the hallmarks of our exclusive products, which are meticulously planned and tested. We select only the finest materials, and our products meet the highest quality standards.

Docks on posts Docks on wheels

SYNONYMOUS WITH LIGHTWEIGHT

Designed to last, our docks on posts or wheels are manufactured with a modular system. We can therefore create a dock suitable for any location. Our removable, interchangeable panels mean that your dock can be easily manipulated over the years. With our docks on wheels, installation and removal have never been easier!

ADVANTAGES AND FEATURES

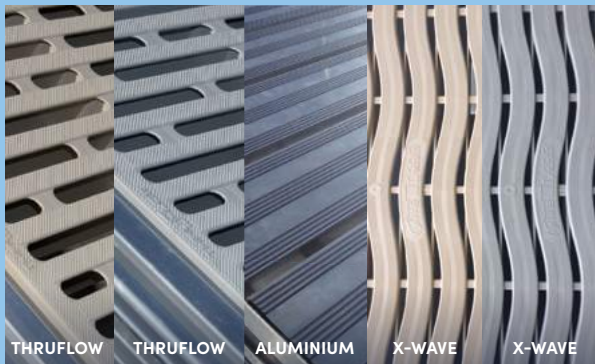
- ▣ Modular system
- ▣ Unlimited configuration possibilities
- ▣ Track for accessories (no drilling)
- ▣ Aluminum structure (durable, corrosion resistant, maintenance free)
- ▣ Removable panels for easy handling (wood, aluminum, X-Wave)
- ▣ Stainless steel bolts and screws
- ▣ Galvanized steel posts
- ▣ Vinyl post caps
- ▣ Cedar, coloured plastic or aluminum decking
- ▣ Easy installation requiring 1 or 2 people

10', 15', AND 20' DOCKS ON POSTS INCLUDE

- 1 aluminum structure
- Cedar, plastic or aluminum decking
- 2 bottom plates 7" x 7"
- 2 galvanized 6' posts
- 2 post caps
- 2 hinges

WEIGHT OF THE FRAME

DIMENSIONS	10'	15'	20'	WEIGHT OF THE CEDAR PER 5' PANEL
28"	60 lb	89 lb	156 lb	32 lb
4'	69 lb	104 lb	170 lb	45 lb
5'	74 lb	111 lb	176 lb	61 lb
6'	84 lb	118 lb	180 lb	74 lb
8'	102 lb	140 lb	190 lb	96 lb



THRUFLOW THRUFLOW ALUMINIUM X-WAVE X-WAVE

PLASTIC OR ALUMINUM DECKING

Our anti-slip plastic deckings are available in beige or grey. They are very lightweight, have a long service life, and require very little maintenance. The robust quality of the aluminum decking is ideal for high-use areas.



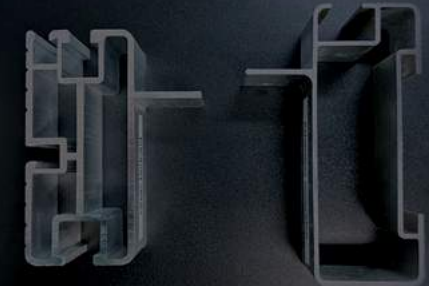
WITH WHEELS

10', 15', and 20' (wheel in option) docks include:

- 1 aluminum structure
- Wood, plastic or aluminum decking
- 1 axle with wheels
- 2 galvanized 6' posts
- 2 post caps
- 2 hinges
- Option: axle stabilizers

QUALITY THAT SHOWS

30% MORE ALUMINUM FOR UNSURPASSED STRENGTH



BERTRAND DOCKS

COMPETITION

POST SCREWS IN LINE WITH THE DOCK THAT PROTECT YOUR BOATS



QUICK CONNECT" SYSTEM WITHOUT DRILLING THANKS TO OUR UNIQUE J-CLIP CONCEPT WHICH IS QUICK AND EASY TO MOVE



RESIDENTIAL

Floating docks

Our residential floating docks are perfect for deep water or where water levels vary significantly.

ADVANTAGES AND FEATURES

- ✔ Aluminum structure (durable, corrosion resistant, and maintenance free)
- ✔ Stainless steel bolts
- ✔ Standard chain attachments
- ✔ Connecting hinges
- ✔ Insulated 12"- or 16"- high floating drums
- ✔ Decking options (cedar, plastic or aluminum)
- ✔ For deep water or where water levels vary significantly
- ✔ Sold per square foot



SWIMMING RAFT

Swimming rafts include:

- 1 aluminum structure
- 12" floating drums
- Standard chain attachments
- Decking options (cedar, plastic or aluminum)

FOR RESIDENTIAL FLOATING DOCKS



CONNECTING HINGES

FOR RESIDENTIAL



TRANSPORT WHEEL



CORNER BUMPERS



CHAIN ATTACHMENT



NYLON ROD HOLDER



COMMERCIAL

Floating docks

A must-have for marinas, private clubs, municipalities, recreational harbours, big vessels and other large-scale projects.

FOR COMMERCIAL FLOATING DOCKS



FLEXI-BLOC CONNECTING HINGE

ADVANTAGES AND FEATURES

- ✔ Aluminum structure, 6000 marine grade
- ✔ Vast choice of lateral extruded aluminum profiles
- ✔ Diagonal and lateral bracing for greater stability of floating docks
- ✔ Sliding track system on 3 sides for easy installation of accessories
- ✔ Connecting hinges on track system for easy width adjustment between fingers for different-sized boats
- ✔ Reinforced and semi-rigid elastomer Flexi-bloc hinge
- ✔ Buoyancy of 30 to 50 lb/ft² (146 to 245 kg/m²) or more, available on request
- ✔ Polyethylene rotomolded floats (HDPE) with minimum 3/16" wall thickness filled with expanded polystyrene (EPS) with a density of 1 lb/ft³ (16 kg/m³) or more, available on request
- ✔ Freeboard from 12" to 24" (300 mm to 600 mm) or more, available on request
- ✔ Optional channel and service pedestal for sanitary systems, electrical conduits and others
- ✔ Mooring system possible with chain and mooring buoy, pillar, vertical rail, horizontal arm anchor, elastic strap, cables, etc.

AND COMMERCIAL FLOATING DOCKS



PLASTIC OR ALUMINUM DECKING

Dock accessories

ACCESSORIES THAT MAKE
A DIFFERENCE



CLEATS 8"

8" cleat in aluminum with stainless steel hardware.
No drilling of the track system required.



CLEATS 10"

10" cleat in aluminum with stainless steel hardware.
No drilling of the track system required.



MOORING WHIP PLATE

Mooring plate allows you to firmly anchor your mooring whips to the track system. Movable, no drilling required. Sold in pairs.



BENCH

Two-person bench in cedar and aluminum. Is installed on and moves along the track system.



LADDER

In welded aluminum with choice of 3, 4, or 5 steps.



DOUBLE KAYAK RACK

Adjustable rack, 22" deep for storing 2 kayaks to free up space on the dock.



SINGLE OR DOUBLE ADJUSTMENT WINCH

Allows the dock height to be adjusted, one or two corners at a time, by one person alone, without going into the water.



STAIRS

Height-adjustable stairs with anti-slip surface providing safe, easy access. Option 2, 3, 4, 5 or 6 steps.



DOCK CONNECTOR

Movable aluminum hinge on the track that can be used for different configurations. Unhooks upon removal of the hitch pin.



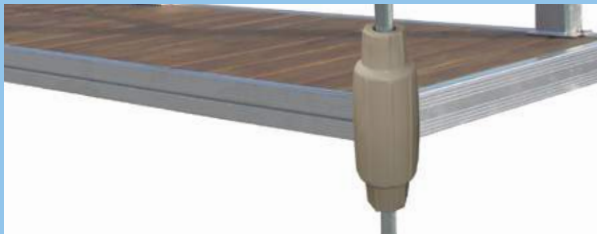
STABILIZER

Aluminum, recommended for depths of more than 3' to improve the structure's stability.



VERTICAL BUMPER

Available in aluminum or vinyl, beige or black, protects boats above and below water level.



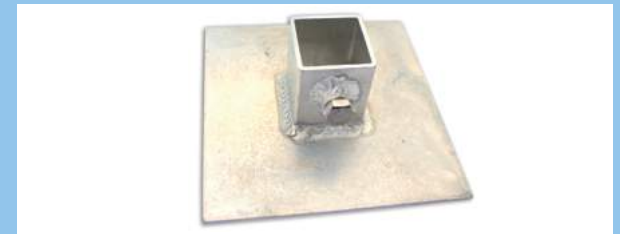
TORPEDO BUMPER

Corner bumper available in beige or black. Installed on a post.



VINYL BUMPERS

Added to the sides of the dock to protect your boat. No drilling required.



BOTTOM PLATES

7" x 7" aluminum support plates providing greater stability in the bottom of the water.



STARTER BRACKET

Starter bracket allows you to attach your dock to a base. Available from 6" to 6'.



WOOD POSTS AND MANILLA ROPE

4" x 4" x 42" wood posts and 1 ½" manilla rope, for a beautiful finish to your installation.



AXLE, BRACKETS, AND WHEELS

24" x 8" wheels with axle and fasteners for ease of moving and handling.



BOAT LIFTS THE BEST PROTECTION FOR YOUR BOAT

Since 1995, Bertrand Docks is committed to offering you high-quality boat lifts that protect watercraft from wear and tear.

MANUAL

Boat lifts



M1200



M1200 VERTICAL 60"



M2000



M3400

WARNING

In addition to using the lift appropriately, the weight of the following elements must be taken into account in determining the capacity of your lift: the boat, motor, accessories, gas, and the water in the ballasts.

Otherwise, Bertrand Docks will not be liable and the warranty will be null and void. Our boat lifts are not designed to lift people.

ADVANTAGES AND FEATURES

- Easy assembly with minimum maintenance
- 80% factory assembly
- Lightweight, durable structure
- All-aluminum structure with MIG-pulse welding (durable, corrosion resistant, and maintenance free)
- Stainless steel bolts and cables
- Bunk and side guides included in purchase price on M2000 models and above
- Aluminum/plastic centering rails
- V-shaped bunk for M3400, M4500 and M550 models
- Cantilever models (1 200 lb capacity)
- Vertical lift models (1 200 to 5 500 lb capacity)
- Swivel pads for enhanced stability
- Side guides included

MANUAL

Boat lifts



M4500



M3500 PONTON



CANOPY FOR
WAKEBOARD
TOWER.

M5500

OPTIONS

- 12V motor
- 110V motor
- Transport kit with wheels
- Motor stop
- 20', 24', or 26' canopies and canopy for wakeboard tower, 9 colours of canvas with 50" overhang
- Vertical entry guide M2000 and above
- Adjustable legs, drilling required (M2000 and above)

CHOICE OF CANVAS COLOURS

Colour options may vary.



MODEL	WIDTH	CAPACITY	WEIGHT	LEGS	LIFT	MADE FOR
Multimaster M1200	72"	1 200 lb	130 lb	32"	36"	Rowboats and Sea-Doo
Multimaster M1200 vertical	60"	1 200 lb	140 lb	32"	42"	Sea-Doo
Multimaster M2000	98"	2 000 lb	280 lb	64"	60"	12' to 17'
Multimaster M3400	118"	3 400 lb	340 lb	64"	60"	19' to 20'
Multimaster M3500	122"	3 500 lb	310 lb	64"	60"	Pontoon
Multimaster M4500*	122"	4 500 lb	415 lb	64"	60"	20' to 24'
Multimaster M5500*	122"	5 500 lb	610 lb	64"	60"	24' to 28'

M2000 and above equipped with side guides. M3400, M4500, M5500 equipped with V-shaped bunk.

* Option of adapting these models for pontoon boats.

HYDRO-CABLE

Boat lifts



HC4500 - HC8500



HYDRAULIC PUMP

OPTIONS

- Canopy
- Transport kit with wheels
- Vertical entry guide
- Adjustable legs, drilling required
- Stop motor

ADVANTAGES AND FEATURES

- ▣ Enables you to lift and lower your boat with no physical effort
- ▣ Minimum maintenance
- ▣ Lightweight, durable structure
- ▣ Lift capacity of 4 500 lb or more
- ▣ Protects your boat from rubbing against the dock
- ▣ All-aluminum structure (durable, corrosion resistant, and maintenance free)
- ▣ Stainless steel hardware
- ▣ High-performance MIG-pulse welding
- ▣ Adjustable legs
- ▣ Hydraulic unit
- ▣ Cylinders containing environmentally-friendly biodegradable hydraulic oil
- ▣ 2 wireless remote lift mechanisms
- ▣ Manual control included
- ▣ 12V and 24V power supply (HC8500 model)
- ▣ Side guides included
- ▣ Adjustable V-shaped bunk
- ▣ Aluminum/plastic centering rails

MODEL	WIDTH	CAPACITY	WEIGHT	LEGS	LIFT	MADE FOR
Hydro-cable HC4500*	122"	4 500 lb	475 lb	64"	52"	20' to 24'
Hydro-cable HC6500*	122"	6 500 lb	655 lb	64"	52"	24' to 28'
Hydro-cable HC8500*	132"	8 500 lb	755 lb	64"	52"	28' and above

* Option of adapting these models for pontoon boats.

HYDRO-LIFT

Boat lifts

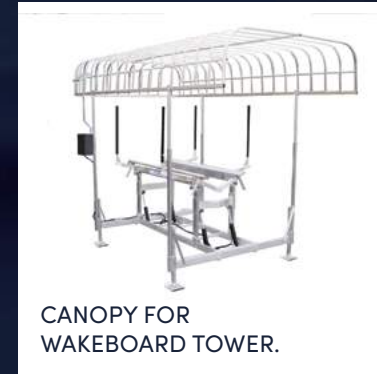
ADVANTAGES AND FEATURES

- ▮ Enables you to lift and lower your boat with no physical effort
- ▮ No cables, no pulleys
- ▮ Longer lifespan
- ▮ Minimum maintenance
- ▮ Lightweight, durable structure
- ▮ Lift capacity up to 12 000 lb
- ▮ Protects your boat from rubbing against the dock
- ▮ All-aluminum structure (durable, corrosion resistant, and maintenance free)
- ▮ Stainless steel hardware
- ▮ High-performance MIG-pulse welding
- ▮ Adjustable legs
- ▮ Hydraulic unit
- ▮ Cylinders containing environmentally-friendly biodegradable hydraulic oil

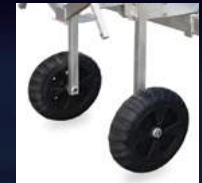
- ▮ 2 wireless remote lift mechanisms
- ▮ Manual control included
- ▮ 12V and 24V power supply (HC8500 model)
- ▮ Side guides included
- ▮ Adjustable V-shaped bunk
- ▮ Aluminum/plastic centering rails

OPTIONS

- Canopy
- Transport kit with wheels
- Vertical entry guide
- Adjustable legs, drilling required
- Stop motor



CANOPY FOR WAKEBOARD TOWER.



HL4500 À HL15000

MODEL	WIDTH	CAPACITY	WEIGHT	LEGS	LIFT	MADE FOR
Hydro-lift HL1500	72"	1 500 lb	195 lb	32"	48"	Rowboats and Sea-Doo
Hydro-lift HL4500*	132"	4 500 lb	432 lb	48"	65"	21' to 24'
Hydro-lift HL6500*	132"	6 500 lb	570 lb	48"	65"	23' to 27'
Hydro-lift HL8500*	132"	8 500 lb	615 lb	48"	65"	24' to 32'
Hydro-lift HL10000*	153"	10 000 lb	810 lb	48"	72"	28' to 34'
Hydro-lift HL12000*	153"	12 000 lb	930 lb	48"	72"	30' to 36'

* Option of adapting these models for pontoon boats.

Lift accessories

A. SOLAR PANEL - 20W solar panel. Charge controller and battery box that can be used with a 12V direct drive motor.

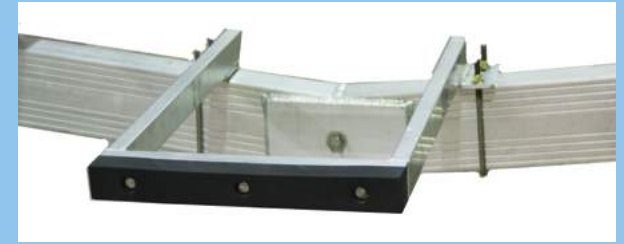
B. ADJUSTABLE LEGS, DRILLING REQUIRED - Allows you to easily adjust and level your lift. Rise up to 48". $\frac{1}{4}$ " socket required.

C. VERTICAL ENTRY GUIDE - Provides protection and visual help when centering your boat. Height 60".



CANOPY

Protects watercraft and makes it unnecessary to remove and install protective tarps on a daily basis.



MOTOR STOP

Protects the motor from being hit due to poor positioning in the boat lift.



DIRECT-DRIVE MOTOR

12V or 110V motor, with optional 15' cord pendant for manual lift.



TRANSPORTATION HANDLES

Provides easier handling when manipulating the lift.



CENTRAL TRANSPORT WHEELS

Two 24" wheels mounted on a central lift system for effort-free use.



2-AXLE TRANSPORT KIT

4 aluminum 12" wheels mounted on 2 axes that can be left in the water after installation.



ADJUSTABLE TRANSPORT KIT

4 independent 24" wheels provide stability and facilitate movement.



BERTRAND
Docks

A SOLID GUARANTEE, REFLECTING THE QUALITY OF OUR PRODUCTS

Bertrand Docks guarantees its aluminum structures and welding for a five-year period, and the mechanics and all accessories that it manufactures for a two-year period. This warranty applies to the normal use of the product under normal conditions.

During the warranty period, Bertrand Docks will repair or replace the product, as required, free of charge upon presentation of the invoice. This warranty does not apply to a product that has been used improperly, damaged accidentally, or left in the water during the winter. Bertrand Docks is not responsible for the lake or river bottom.

Our guarantee applies to the initial buyer only. The guarantee does not cover installation and removal fees. Please refer to the full text at bertranddocks.com.

QUEBEC

9371 Bourque Blvd.
Sherbrooke (Quebec)
CANADA J1N 0G2

ONTARIO

102 St-David Street
Noëlville (Ontario)
CANADA P0M 2N0

bertranddocks.com

info@quaisbertrand.com

Tel.: 819-847-1555

Fax: 819-847-3555